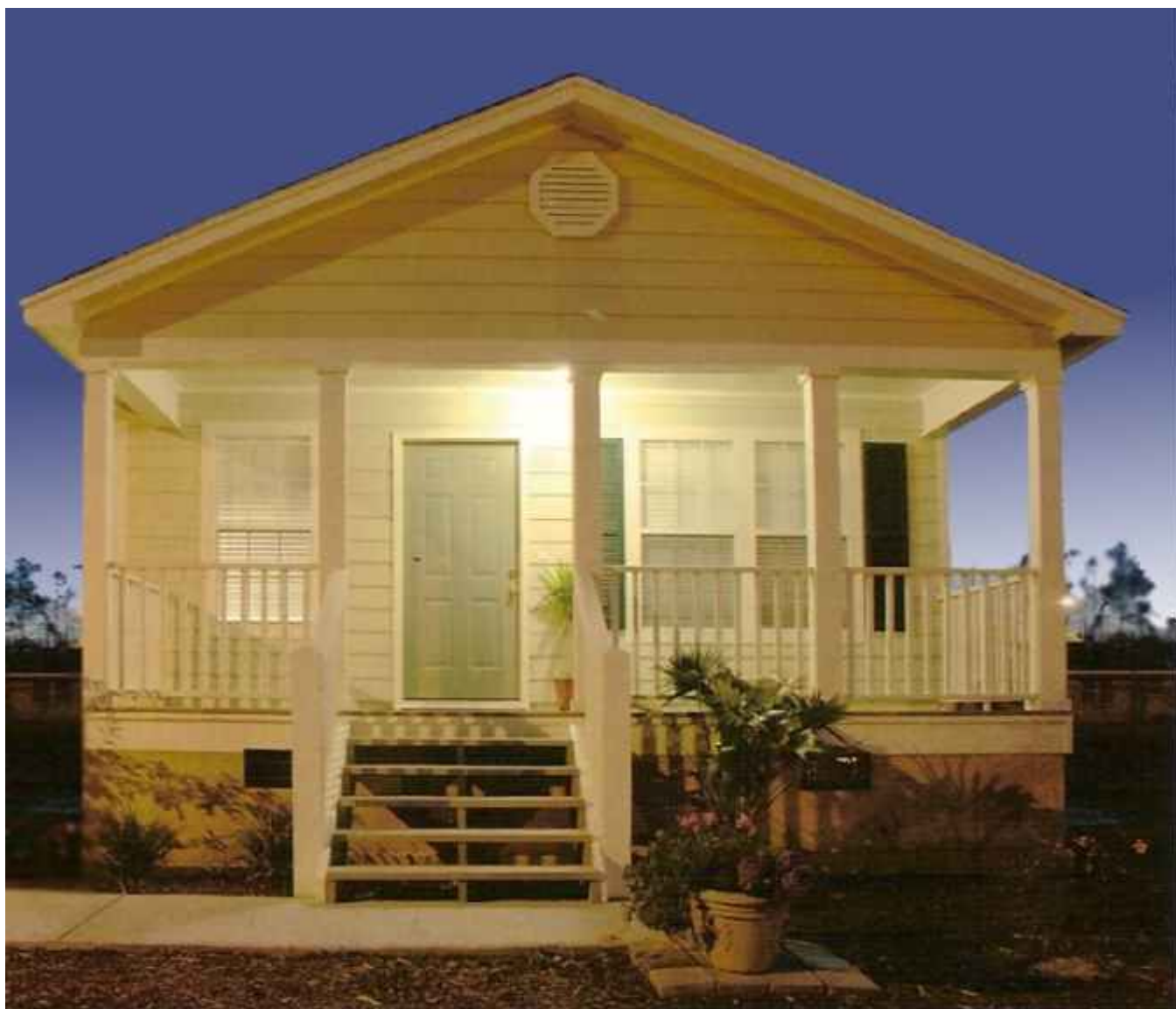


12/2009

# ECO-STRUCTURES



**SUPPLY / DESIGN / BUILD**

**RESIDENTIAL, COMMERCIAL AND AGRICULTURAL**

[WWW.JOHNSONBUILDINGSYSTEMS.COM](http://WWW.JOHNSONBUILDINGSYSTEMS.COM)

**Tel: 800-445-7249 or (215) 673-6050 Fax: (215) 322-2076**



# KD-STEEL STRUCTURES

## Solid Core Insulated Building Packages

### Versatube Steel Building Systems

The Most Versatile Framing System Available

#### 2" x 3" Tube GV SERIES

Steel frames are 5' o.c., designed and engineered to meet or exceed the load requirements by most building codes. Our 12' x 20' x 8' frame is engineered for 40 lb. Snow load and 90 mph wind load with no bracing. With bracing we can go to 12' high eave by 30' wide and as long as required.

3:12      5:12      7:12  
Gable Roof Pitch.

Standard Frame Package as Shown:  
2" x 3" - 14 Gauge Galvanized Steel Tubing  
Standard 8'-12' eave height buildings



#### Options Available

Girt/Purlin Packages, Building Enclosures, Bracing Packages, Height and Length Extensions Available.

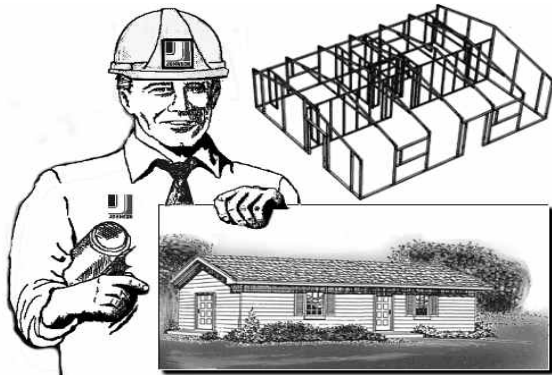


**COMMERCIAL • LIGHT INDUSTRIAL  
RESIDENTIAL • GARAGE • SHOP • STORAGE**  
Economical Panel for KD-Steel Structures  
Horizontal or Vertical Panel Installation.



#### Sleeve Connection 4" to 6":

Most of the KD-Structure is easily put together using this system making any installation quick and simple. Just insert the tubing where it belongs and tek screw together.

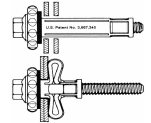


21' x 62' (1300 sq.ft.) START-R-HOUSE

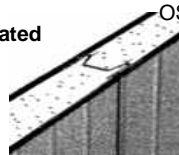
**2"x4" SERIES  
UP TO 52' WIDE  
X 16' EAVE**



Storage Structures  
Roof Penthouses  
Greenhouses  
Equipment Rooms  
Garages  
Animal Labs  
Utility Buildings

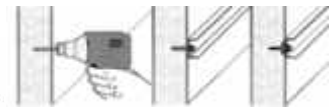
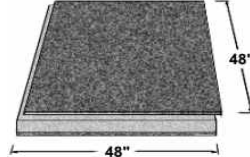


**Solid Core Insulated  
Panel System  
Urethane**



#### 4-1/2" SOL-R-BLOCK

OSB Panels that are easy to handle



**FAB-LOK PANEL FASTENER**



Standard KD-Building Packages are simple to ship or even put in the back of a utility truck.



(Frame Packages are Max 8' long.)  
Local Delivery is available.



**2" x 3"  
14 Ga.**



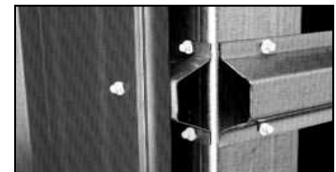
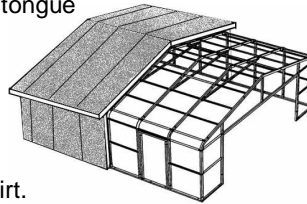
.120" WHITE ALUMINUM  
BASE CHANNEL OR ANGLE

4" A-44 X 16'      3" A-46 X 16'      2" A-40 X 16'

**14 Ga. KD-Steel Tubular  
(w/LD Hat Sections)  
3:12 Frame System**

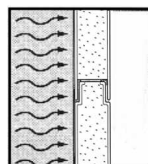
The Precision joint connection has a thermal lock tongue and groove design.

The fastener shall positively connect the interior face sheet of the panel to the Purlin and Girt.

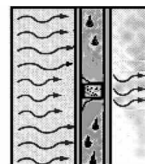


**LD HAT SECTION**

**Preferred  
Solid Core  
Construction**



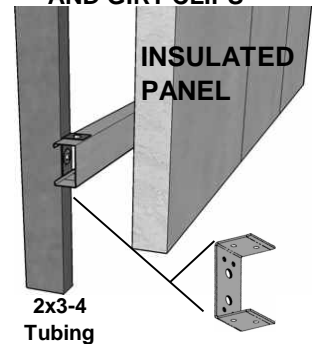
**Ordinary Stick  
Construction**



**SOLID CORE STRUCTURAL  
INSULATED PANELS**

No sagging insulation, Purlins and Girts do not compress insulation and reduce R-value, No air infiltration, Guaranteed Savings on your utility bills.

**HD GIRTS AND PURLINS  
4" A-44PG PURLIN  
AND GIRT CLIPS**



# ECO STRUCTURES

## TIMBER LINK TILT-UP FRAMING SYSTEM

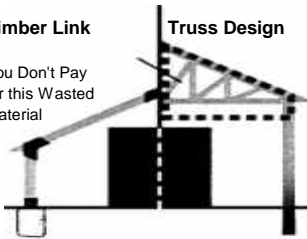
### 6X6 TIMBER LINK EASYWARE (HARDWARE)

Enables you to construct a simple, strong and spacious building, faster, easier, and for less money. Timber Link provides the strength of Post and Beam. Timber Link joins 6" x 6" solid wood members or 2"x 6" engineered laminated timbers meeting local building code compliance.



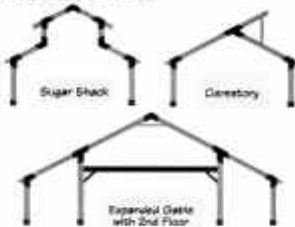
#### Timber Link

You Don't Pay for this Wasted Material



The two most popular buildings have a Gable or Gambrel roof. Clear span buildings up to 30ft wide (by any length) can be erected using either one of these designs. Our 5 sided and 6 sided structural wall designs are also available.

#### OPTIONAL DESIGNS



Optional Steel / Wood beams allow for second floors.



**No Moisture!  
No ROT!  
No Waste!**

### Timber Link TILT-UP Easyware

Made of 3/16" carbon steel black powder coated for moisture protection. Products carry written transferable lifetime warranty and come with an easy to follow, illustrated field manual, for the first time or professional builder.

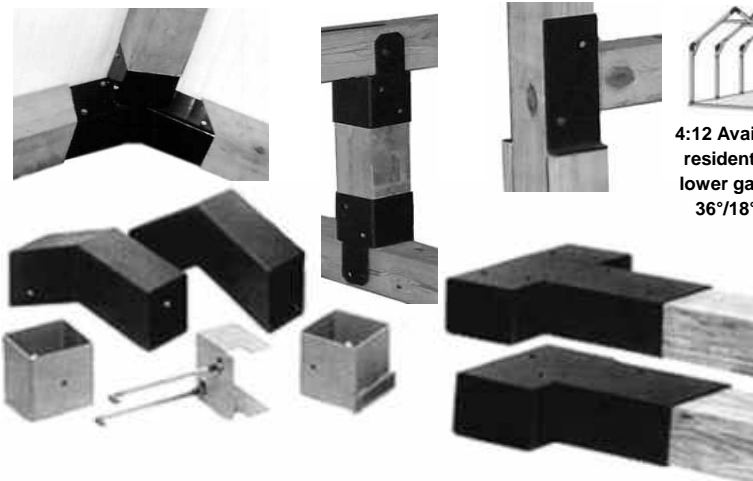
**Standard 7:12  
Gable 30° Roof  
Pitch**



**For Gambrel 36°  
Roof Pitch Use  
5 Sets of  
L-Bo's 4:12 Pitch**



**4:12 Available for  
residential with  
lower gable roof  
36°/18° Pitch**



### IMPs/SIPs WALL AND ROOF DECK

**26 Ga. STUCCO  
EMBOSSED  
METAL-SHIELD  
PANEL SYSTEM**

**3" EPS R13.5  
4" EPS R18 \*  
5" EPS R22  
6" EPS R27 \***

Florida Approval \*  
FL6787 / FL9685

**2-3/4" URE R22  
4" URE R32**



**CLASS 1 FIRE RATED  
URETHANE INSULATED PANELS**  
standard 45" Coverage  
**FM-4880/ASTM-E84**  
Passed testing Class A/1  
Fire rating

### TIMBER LINK - Basic Parts for 4/12 or 7/12 Roof Pitch. (6x8/8x8 available)

Description	Where to Use
L-BO (7:12 Pitch) 30°	Peak and Eave
(Pass-Thru) "T" Same angle as L-BO	Expanding Spans
(Structural) "T" Same angle as L-BO	Expanding Spans
L-BO (4:12 Pitch) Gambrel 36°	Peak and Eave
L-BO (4:12 Pitch) Gable Eave 18°	Eave Only
Hinged Frame Anchor (6"x 6")	L-Bolts Included
Rigid Frame Anchor (6"x 6")	L-Bolts Included
Hinged Frame Anchor (Pole Mount)	L-Bolts Included
Hinged Frame Anchor (Skid Mount)	L-Bolts Included
Floor Hanger for Steel or Wood Beams	2nd Floor
Upper Shed Roof Hanger	Extend Roof
Lower Shed Roof Hanger	Extend Roof
Timber Trough (Add For)	Directional Support

### Solid Core Structural (SIPS) Insulated Panels



Other Bay Options Include Steel Truss Frames with **8x8** Timber Support. Works the same way as our 6x6 Timber Link but with a larger clear span of **40 feet**.



# RIGID FRAME STEEL STRUCTURES

## RESIDENTIAL COMMERCIAL AGRICULTURAL

### Pre-Engineered Heavy Duty Rigid Frame System

Steel is non-combustible, high-strength construction with the safety of up to 150+ mph, and seismic 4 earthquake rating, gives your home a lifetime of value.



Foundation shows anchor bolt settings, and notched for panels. (Foundation By Others)

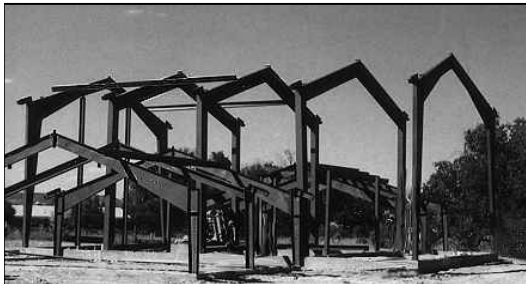
Strength that only steel can offer.



No other construction material can match steel's superior strength and durability. In fact, steel's strength allows homes to be designed with unlimited clear span open areas.



C or Z sectional steel joists bolted into position for first story flooring.



Steel Purlins and Girts being bolted to system to stabilize structure.



Interior framing consisting of:

Hat channels    2 x 4 wood studs    Metal studs

#### Various Insulated Metal Panel Systems

The precision connection joint has a Thermal-Lock tongue and groove design for quick installation.



#### SIDING



#### Insulated SOL-R-BLOCK Panel System

The shiplap connection has an air tight design and nailable finish.



#### BRICK STONE



#### Non-Insulated Corrugated Metal Panels

Many different finished options for roofing and siding can be Combined with INSOLRAE Solid Core T&G Panels providing a very efficient system.



#### STUCCO



#### VINYL



SOL-R-BLOCK PANEL

ARCHITECTURAL / COMMERCIAL DOORS AND WINDOWS AVAILABLE

DESIGNED FOR INSULATED WALL PANEL CONSTRUCTION



PAINTED STEEL PANEL

Protect Your Future With A Home Framed In Steel!



Johnson Building Systems, Inc.  
975 Jaymor Rd.  
Southampton, PA 18966-3854  
215-673-6050 or Fax: 215-322-2076  
www.JohnsonBuildingSystems.com

**KD-STEEL STRUCTURES**  
BY JOHNSON BUILDING SYSTEMS  
SUPPLY AND DESIGN  
SHIP AND ERECT ANYWHERE 1-800-445-7249