

STONE CREEK BLUEBERRY FARMS

RT 54, HAMMONTON, NJ 08037



KD-STEEL STRUCTURES
BY JOHNSON BUILDING SYSTEMS

**KD-TUBULAR
BUILDING SYSTEMS**

PROJECT: **LOADING DOCK**
12' x 24' x 12' Eave (288 sq.ft.)
4" EPS Insulated T&G Panels (R-18)

215-673-6050 or Fax: 215-322-2076 - www.JohnsonEnergyGroup.com - Johnson Building Systems, Inc. - 975 Jaymor Rd. #4-5 - Southampton, PA 18966-3854



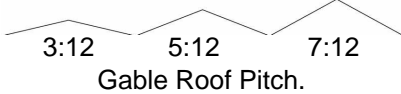
KD-STEEL STRUCTURES

Solid Core Insulated Building Packages

Versatube Steel Building Systems

2" x 3" Tube GV SERIES

Steel frames are 5' o.c., designed and engineered to meet or exceed the load requirements by most building codes. Our 12' x 20' x 8' frame is engineered for 40 lb. Snow load and 90 mph wind load with no bracing. With bracing we can go to 12' high eave by 30' wide and as long as required.



Standard Frame Package as Shown:
2" x 3" - 14 Gauge Galvanized Steel Tubing
Standard 8'-12' eave height buildings



Options Available

Girt/Purlin Packages, Building Enclosures, Bracing Packages, Height and Length Extensions Available.



**COMMERCIAL • LIGHT INDUSTRIAL
RESIDENTIAL • GARAGE • SHOP • STORAGE**
Economical Panel for KD-Steel Structures
Horizontal or Vertical Panel Installation.

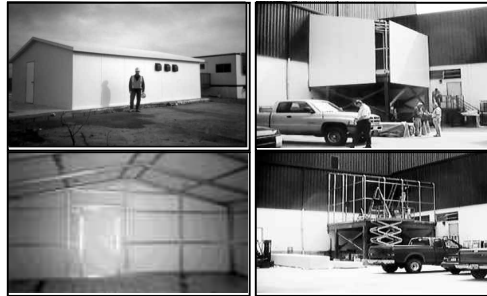


Sleeve Connection 4" to 6":

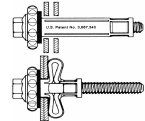
Most of the KD-Structure is easily put together using this system making any installation quick and simple. Just insert the tubing where it belongs and tek screw together.

Size	Prod.#	Lbs. Frame Only	Standard Frame Package	Additional Height Extension (10pcs p/pkg) (add 2 pcs for each 4/5' extension)		Brace Package (5 Braces Std.) Add 1 Brace for each 4/5' Length
10' x 10'	SW-1	445	\$699			
10' x 15'	SW-5	470	\$799			
10' x 20'	SW-10	495	\$1,036			
12' x 20'	SW-12	525	\$1,082			
14' x 20'	SW-14	555	\$1,188	1'	\$111	
18' x 20'	DW-18	615	\$1,320	2'	\$221	\$297
20' x 20'	DW-20	645	\$1,353	3'	\$330	\$350
24' x 20'	DW-24	705	\$1,551	4'	\$442	\$442
30' x 20'	DW-30	775	\$1,782	5'	\$553	\$561

The Most Versatile Framing System Available



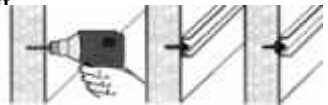
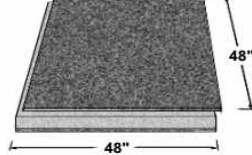
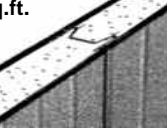
- Storage Structures
- Roof Penthouses
- Greenhouses
- Equipment Rooms
- RV/Boat Covers
- Garages / Carports
- Animal Labs
- Utility Buildings



Solid Core Insulated Panel System
Urethane
2-3/4" @ \$5.25 sq.ft.
4" @ \$5.75 sq.ft.
EPS
4" @ \$5.25 sq.ft.
6" @ \$5.65 sq.ft.

4-1/2" SOL-R-BLOCK @ \$4.60 sq.ft

OSB Panels that are easy to handle



FAB-LOK PANEL FASTENER

HD GIRTS AND PURLINS
2" X 4" A-C CHANNEL
AND CLIPS

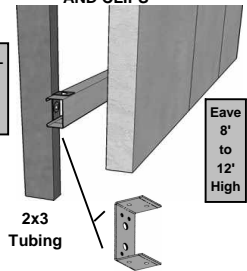
Standard KD-Building Packages are simple to ship or even put in the back of a utility truck.



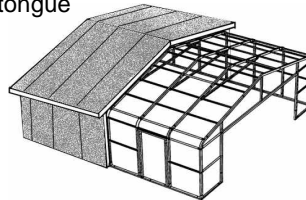
(Frame Packages are Max 8' long.)
Local Delivery is available.

- 2" x 3" 14 Ga.
- 4" A-44 X 16'
- 3" A-46 X 16'
- 2" A-40 X 16'

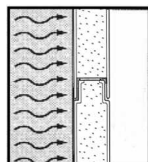
AC CHANNEL \$3.50/Lin Ft.
JBS 2x4 Clip \$4.50 each



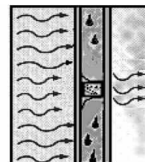
The Precision joint connection has a thermal lock tongue and groove design. The fastener shall positively connect the interior face sheet of the panel.



Preferred Solid Core Construction



Ordinary Stick Construction



SOLID CORE STRUCTURAL INSULATED PANELS

No sagging insulation, Purlins and Girts do not compress insulation and reduce R-value, No air infiltration, Guaranteed Savings on your utility bills.

14 Ga. KD-Steel Tubular (w/LD Hat Sections) 3:12 Frame System
Net Price / Sq. Ft.

8' High Eave Frame Buildings		Length (Ft)				
		20	30	40	50	60
Width (Ft)	10	\$9.70	\$9.00	\$8.60	\$8.50	\$8.35
	12	\$9.70	\$8.60	\$8.05	\$7.80	\$7.60
	14	\$9.00	\$7.95	\$7.30	\$7.05	\$6.75
	16	\$8.90	\$7.70	\$7.05	\$6.75	\$6.50
	18	\$8.60	\$7.30	\$6.75	\$6.40	\$6.10
	20	\$8.50	\$7.30	\$6.60	\$6.40	\$6.10
	24	\$8.50	\$7.30	\$6.60	\$6.25	\$5.95
30	\$8.35	\$7.05	\$6.25	\$5.85	\$5.70	
10' High Eave Frame Buildings		Length (Ft)				
		20	30	40	50	60
Width (Ft)	10	\$10.45	\$9.25	\$8.85	\$8.60	\$8.50
	12	\$10.45	\$8.90	\$8.20	\$7.80	\$7.70
	14	\$10.20	\$8.05	\$7.40	\$7.15	\$6.85
	16	\$9.25	\$7.80	\$7.15	\$6.75	\$6.50
	18	\$8.90	\$7.40	\$6.75	\$6.40	\$6.10
	20	\$9.00	\$7.40	\$6.75	\$6.50	\$6.25
	24	\$9.00	\$7.30	\$6.60	\$6.40	\$6.10
30	\$8.70	\$7.05	\$6.40	\$5.95	\$5.85	
12' High Eave Frame Buildings		Length (Ft)				
		20	30	40	50	60
Width (Ft)	10	\$10.80	\$9.40	\$9.00	\$8.70	\$8.60
	12	\$11.10	\$9.00	\$8.35	\$7.95	\$7.80
	14	\$10.70	\$8.20	\$7.50	\$7.15	\$6.85
	16	\$9.90	\$7.95	\$7.30	\$6.85	\$6.60
	18	\$9.50	\$7.60	\$6.90	\$6.50	\$6.20
	20	\$9.40	\$7.60	\$6.90	\$6.50	\$6.20
	24	\$9.40	\$7.40	\$6.75	\$6.40	\$6.10
30	\$9.15	\$7.15	\$6.40	\$5.95	\$5.95	