

# LANSDALE ICE HOUSE

EQUIPMENT ROOM - LANSDALE, PA 19438



LANSDALE ICE HOUSE PROJECT  
28' X 20' Building with 10' 6" eave  
4" EPS Insulated Panels (R-18)



# KD-STEEL STRUCTURES

## Solid Core Insulated Building Packages

### Versatube Steel Building Systems

#### 2" x 3" Tube GV SERIES

Steel frames are 4/5' o.c., designed and engineered to meet or exceed the load requirements by most building codes. Our 12' x 20' x 8' frame is engineered for 40 lb. Snow load and 90 mph wind load with no bracing. With bracing we can go to 16' high by 30' wide and as long as required with optional 1, 2, 3 and 4:12 Gable Roof Pitch

Standard Frame Package as Shown:  
2" x 3" - 14 Gauge Galvanized Steel Tubing  
Standard 8'-12' eave height buildings

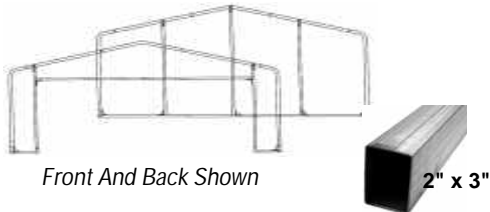


#### Options Available

Girt/Purlin Packages, Building Enclosures, Bracing Packages, Height and Length Extensions Available.

#### Standard Frame

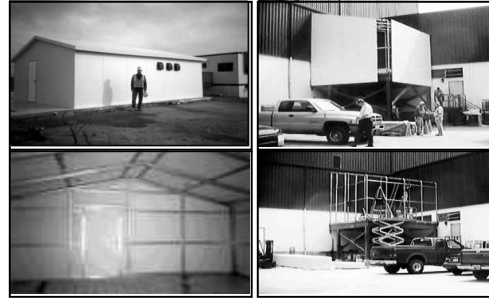
Enclosure Packages.



#### Sleeve Connection 4" to 6":

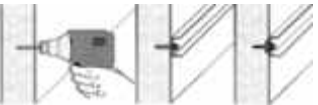
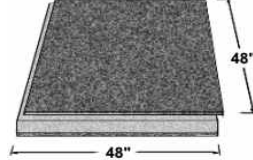
Most of the KD-Structure is easily put together using this system making any installation quick and simple. Just insert the tubing where it belongs and tek screw together.

**Solid Core Insulated Panel System**  
Urethane  
2-3/4" @ \$5.25 sq.ft.  
4" @ \$5.75 sq.ft.  
EPS  
4" @ \$5.25 sq.ft.  
6" @ \$5.65 sq.ft.



4-1/2" SOL-R-BLOCK @ \$4.60 sq.ft

OSB Panels that are easy to handle



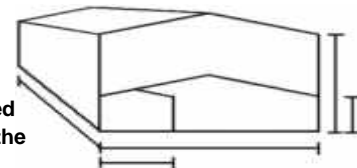
**FAB-LOK PANEL FASTENER**

Standard KD-Building Packages are simple to ship or even put in the back of a utility truck.



(Frame Packages are Max 8' long.)  
Local Delivery is available.

Any Length Preferred not to exceed 2-1/2 times the width.



From 10' to 30' Wide

Eave 7'6" to 12'6" High



Additional Parts List	
Description	Net Price Each
Side Post	\$35.64
Peak	\$29.04
Base End	\$47.52
Base Center	\$39.60
Base Ext.	\$29.04
Pin Only w/plate	\$18.48
Eave Bracket	\$7.26
Purlin Bracket	\$5.10
Purlin End Bracket	\$4.62
58"x1-1/2" Purlin	\$6.18
2"x3" Tube 8'-24'	\$3.30/ft.
Optional:	
20' Sub Girts	
SG1 - 1-1/2"x3.5" 18ga.	\$29.00
SG2 - 3/4"x3.5" 16ga.	\$30.00

Size	Prod.#	Lbs. Frame Only	Standard Frame Package	Additional Height Extension (10pcs p/pkg) (add 2 pcs for each 4/5' extension)		Brace Package (5 Braces Std.) Add 1 Brace for each 4/5' Length	Additional 4/5' Length Extension	Enclosure Package			Front & Back Hat Purlin / Girt Package	Roof & Side Hat Purlin / Girt Package
				1'	\$101			STD Pkg.	Each 1' Height Add.			
10' x 10'	SW-1	445	\$636				\$228	\$288	\$11		\$163	\$343
10' x 15'	SW-5	470	\$726				\$228	\$288	\$11		\$163	\$343
10' x 20'	SW-10	495	\$942				\$228	\$288	\$11		\$163	\$386
12' x 20'	SW-12	525	\$984				\$228	\$324	\$30		\$198	\$386
14' x 20'	SW-14	555	\$1,080	1'	\$101		\$228	\$360	\$41		\$232	\$386
18' x 20'	DW-18	615	\$1,200	2'	\$201	\$270	\$252	\$396	\$41		\$300	\$506
20' x 20'	DW-20	645	\$1,230	3'	\$300	\$318	\$258	\$450	\$60		\$335	\$506
24' x 20'	DW-24	705	\$1,410	4'	\$402	\$402	\$264	\$486	\$60		\$403	\$506
30' x 20'	DW-30	775	\$1,620	5'	\$503	\$510	\$288	\$588	\$71		\$506	\$626

Net Prices In Stock F.O.B. Southampton, PA.

Call us for your customized project quotation 1-800-445-7249