



**PRE-FAB SOLID CORE**



**BUILDING ENVELOPE**

**VERSATUBE**

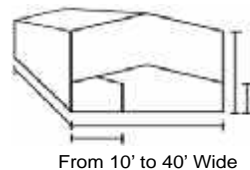
Standard KD-Tubular Building Packages  
Simple to Ship or even put in the  
back of a utility truck



(Frame Packages are Max 8' Long)  
Local Delivery Available

**SLEEVE CONNECTION 4" TO 6"**

KD-Structure is easily put  
together using this  
system making  
installation quick  
and simple



Johnson Building Systems, Inc.  
975 Jaymor Rd.  
Southampton, PA 18966-3854  
215-673-6050 or Fax: 215-322-2076  
www.JohnsonBuildingSystems.com

**KD-STEEL STRUCTURES**  
**BY JOHNSON BUILDING SYSTEMS**  
SUPPLY AND DESIGN  
SHIP AND ERECT ANYWHERE **1-800-445-7249**



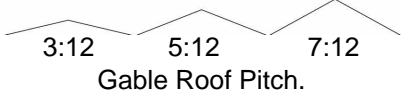
# KD-STEEL STRUCTURES

## Solid Core Insulated Building Packages

### Versatube Steel Building Systems

#### 2" x 3" Tube GV SERIES

Steel frames are 5' o.c., designed and engineered to meet or exceed the load requirements by most building codes. Our 12' x 20' x 8' frame is engineered for 40 lb. Snow load and 90 mph wind load with no bracing. With bracing we can go to 12' high eave by 30' wide and as long as required.



Standard Frame Package as Shown:  
2" x 3" - 14 Gauge Galvanized Steel Tubing  
Standard 8'-12' eave height buildings



#### Options Available

Girt/Purlin Packages, Building Enclosures, Bracing Packages, Height and Length Extensions Available.



**COMMERCIAL • LIGHT INDUSTRIAL  
RESIDENTIAL • GARAGE • SHOP • STORAGE**  
Economical Panel for KD-Steel Structures  
Horizontal or Vertical Panel Installation.

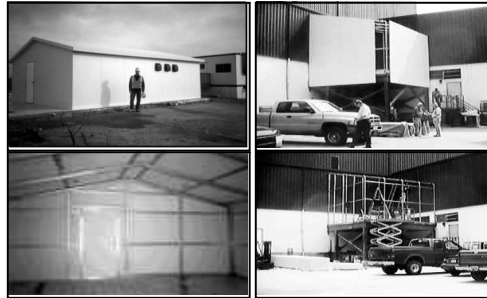


#### Sleeve Connection 4" to 6":

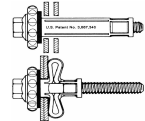
Most of the KD-Structure is easily put together using this system making any installation quick and simple. Just insert the tubing where it belongs and tek screw together.

Size	Prod.#	Lbs. Frame Only	Standard Frame Package	Additional Height Extension (10pcs p/pkg) (add 2 pcs for each 4/5' extension)		Brace Package (5 Braces Std.) Add 1 Brace for each 4/5' Length
10' x 10'	SW-1	445	\$699			
10' x 15'	SW-5	470	\$799			
10' x 20'	SW-10	495	\$1,036			
12' x 20'	SW-12	525	\$1,082			
14' x 20'	SW-14	555	\$1,188	1'	\$111	
18' x 20'	DW-18	615	\$1,320	2'	\$221	\$297
20' x 20'	DW-20	645	\$1,353	3'	\$330	\$350
24' x 20'	DW-24	705	\$1,551	4'	\$442	\$442
30' x 20'	DW-30	775	\$1,782	5'	\$553	\$561

The Most Versatile Framing System Available



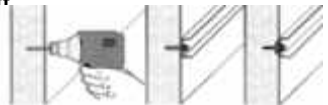
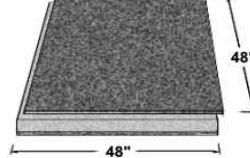
- Storage Structures
- Roof Penthouses
- Greenhouses
- Equipment Rooms
- RV/Boat Covers
- Garages / Carports
- Animal Labs
- Utility Buildings



**Solid Core Insulated Panel System**  
**Urethane**  
2-3/4" @ \$5.25 sq.ft.  
4" @ \$5.75 sq.ft.  
**EPS**  
4" @ \$5.25 sq.ft.  
6" @ \$5.65 sq.ft.

4-1/2" SOL-R-BLOCK @ \$4.60 sq.ft

OSB Panels that are easy to handle



**FAB-LOK PANEL FASTENER**

Standard KD-Building Packages are simple to ship or even put in the back of a utility truck.



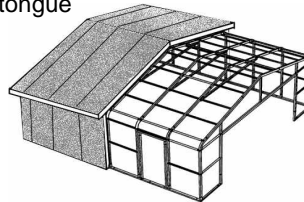
(Frame Packages are Max 8' long.)  
Local Delivery is available.



.120" WHITE ALUMINUM  
BASE CHANNEL OR ANGLE

4" A-44 X 16'    3" A-46 X 16'    2" A-40 X 16'

The Precision joint connection has a thermal lock tongue and groove design. The fastener shall positively connect the interior face sheet of the panel.



#### 14 Ga. KD-Steel Tubular (w/LD Hat Sections) 3:12 Frame System

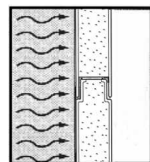
Net Price / Sq. Ft.

8' High Eave Frame Buildings						
		Length (Ft)				
		20	30	40	50	60
Width (Ft)	10	\$9.70	\$9.00	\$8.60	\$8.50	\$8.35
	12	\$9.70	\$8.60	\$8.05	\$7.80	\$7.60
	14	\$9.00	\$7.95	\$7.30	\$7.05	\$6.75
	16	\$8.90	\$7.70	\$7.05	\$6.75	\$6.50
	18	\$8.60	\$7.30	\$6.75	\$6.40	\$6.10
	20	\$8.50	\$7.30	\$6.60	\$6.40	\$6.10
	24	\$8.50	\$7.30	\$6.60	\$6.25	\$5.95
30	\$8.35	\$7.05	\$6.25	\$5.85	\$5.70	

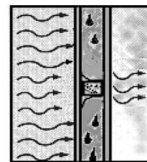
10' High Eave Frame Buildings						
		Length (Ft)				
		20	30	40	50	60
Width (Ft)	10	\$10.45	\$9.25	\$8.85	\$8.60	\$8.50
	12	\$10.45	\$8.90	\$8.20	\$7.80	\$7.70
	14	\$10.20	\$8.05	\$7.40	\$7.15	\$6.85
	16	\$9.25	\$7.80	\$7.15	\$6.75	\$6.50
	18	\$8.90	\$7.40	\$6.75	\$6.40	\$6.10
	20	\$9.00	\$7.40	\$6.75	\$6.50	\$6.25
	24	\$9.00	\$7.30	\$6.60	\$6.40	\$6.10
30	\$8.70	\$7.05	\$6.40	\$5.95	\$5.85	

12' High Eave Frame Buildings						
		Length (Ft)				
		20	30	40	50	60
Width (Ft)	10	\$10.80	\$9.40	\$9.00	\$8.70	\$8.60
	12	\$11.10	\$9.00	\$8.35	\$7.95	\$7.80
	14	\$10.70	\$8.20	\$7.50	\$7.15	\$6.85
	16	\$9.90	\$7.95	\$7.30	\$6.85	\$6.60
	18	\$9.50	\$7.60	\$6.90	\$6.50	\$6.20
	20	\$9.40	\$7.60	\$6.90	\$6.50	\$6.20
	24	\$9.40	\$7.40	\$6.75	\$6.40	\$6.10
30	\$9.15	\$7.15	\$6.40	\$5.95	\$5.95	

Preferred Solid Core Construction



Ordinary Stick Construction



#### SOLID CORE STRUCTURAL INSULATED PANELS

No sagging insulation, Purlins and Girts do not compress insulation and reduce R-value, No air infiltration, Guaranteed Savings on your utility bills.



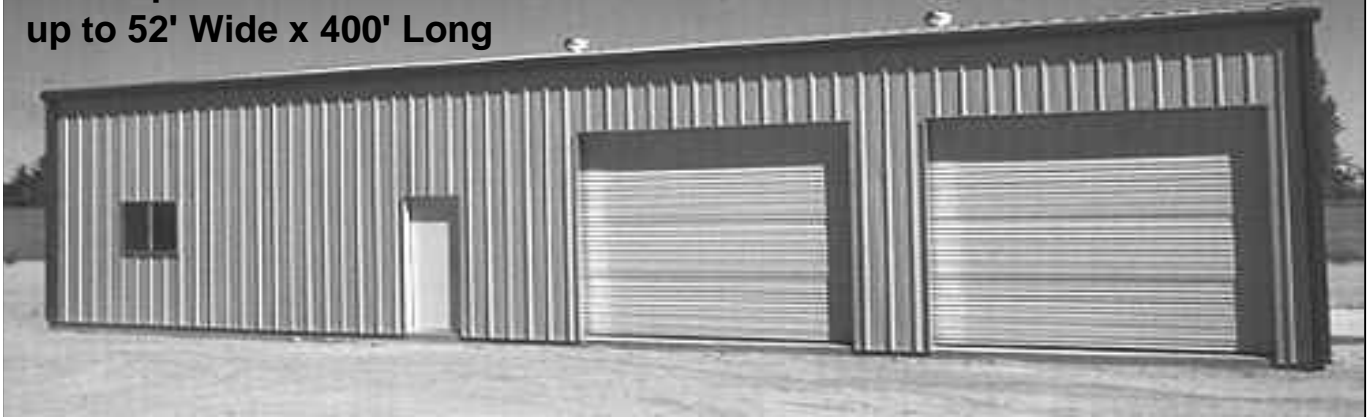
# KD-STEEL STRUCTURES

Solid Core Insulated Building Packages

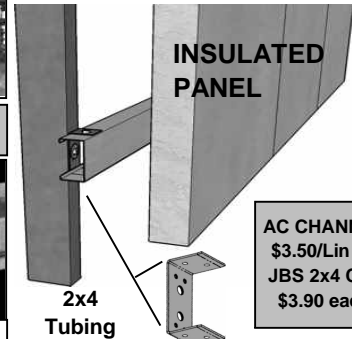
## PRE-ENGINEERED TUBULAR STEEL BUILDING SYSTEMS

HIGH STRENGTH GALVANIZED TUBING FOR RESIDENTIAL AND COMMERCIAL CONSTRUCTION

Clear span sizes available up to 52' Wide x 400' Long



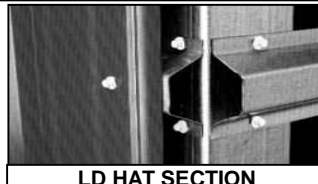
HD GIRTS AND PURLINS  
2" X 4" A-C CHANNEL  
AND CLIPS



AC CHANNEL  
\$3.50/Lin Ft.  
JBS 2x4 Clip  
\$3.90 each

### A BUILDING IS ONLY AS STRONG AS ITS FRAMING

- Steel will not warp, shrink or split and it's non-combustible.
- Tubular steel framing is user-friendly, highly reliable and stronger (pound-for-pound) than any other common construction material.
- Steel components weigh up to 60% less than wood members, reducing foundation loads and concrete requirements.
- Non-load-bearing members can be easily removed and replaced. Expansion is easy.
- Steel means faster assembly and lower maintenance



LD HAT SECTION

### FAST TRACK 2"x 4" FRAME SYSTEMS EAVE 7' 6" TO 16' 0" HIGH PERMANENT OR TEMPORARY AND RELOCATEABLE

#### Standard 3:12 Building Include:

- All galvanized tubular steel framing
- Concrete wedge bolts and drill bits
- 1/2" anchor bolts and nuts
- 1-1/2" galvanized LD hat purlins and girts

#### Excluded:

- Doors and Windows
- Insulated and Non-Insulated
- Siding and Roofing Panels
- 4" Base Track System

#### SHIPMENT 4-5 WEEKS ARO.

Budget Freight Add 10% Net Price

Meets or exceeds all National Building Standards including Boca, UBC, ICBO, Fully compliant with AISC standards and includes 25 year warranty



2" x 4"  
14 Ga.



GALVANIZED STEEL TUBING - 14 Gauge (w/LD Hat Sections)				
W x L	10' Eave	12' Eave	14' Eave	16' Eave
40' x 20'	\$7,453	\$8,257	\$8,600	\$9,207
40' x 24'	\$8,342	\$9,206	\$9,582	\$10,238
40' x 28'	\$9,231	\$10,154	\$10,565	\$11,269
40' x 32'	\$10,121	\$11,102	\$11,547	\$12,300
40' x 36'	\$11,010	\$12,050	\$12,530	\$13,330
40' x 40'	\$11,899	\$12,999	\$13,512	\$14,361
40' x 44'	\$12,788	\$13,947	\$14,495	\$15,392
40' x 48'	\$13,678	\$14,895	\$15,477	\$16,423
40' x 52'	\$14,567	\$15,843	\$16,460	\$17,453
40' x 56'	\$15,456	\$16,792	\$17,442	\$18,484
40' x 60'	\$16,346	\$17,740	\$18,425	\$19,515
40' x 64'	\$17,235	\$18,688	\$19,407	\$20,546
40' x 68'	\$18,124	\$19,636	\$20,390	\$21,576
40' x 72'	\$19,014	\$20,585	\$21,372	\$22,607
40' x 76'	\$19,903	\$21,533	\$22,354	\$23,638
40' x 80'	\$20,792	\$22,481	\$23,337	\$24,669
40' x 84'	\$21,682	\$23,429	\$24,319	\$25,700
40' x 88'	\$22,571	\$24,378	\$25,302	\$26,730
40' x 92'	\$23,460	\$25,326	\$26,284	\$27,761
40' x 96'	\$24,350	\$26,274	\$27,267	\$28,792
40' x 100'	\$25,239	\$27,222	\$28,249	\$29,823
40' x 120'	\$29,686	\$31,964	\$33,162	\$34,977
40' x 140'	\$34,132	\$36,705	\$38,074	\$40,130
40' x 160'	\$38,579	\$41,446	\$42,986	\$45,284
40' x 180'	\$43,025	\$46,187	\$47,899	\$50,438

# **KD-STEEL STRUCTURES** Solid Core Insulated Building Packages

## **INSULATED METAL PANEL SYSTEM (IMPs/SIPs)**



**DEALER REPRESENTATIVE**



**INSULATED PANELS FOR  
BUILDING SYSTEMS CONSTRUCTION**

