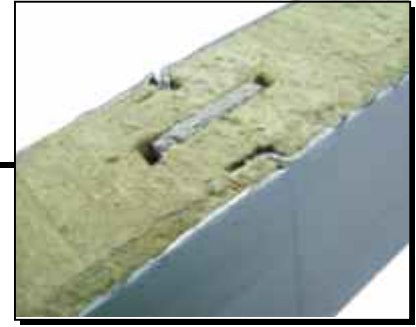


# FIRE-WALLS



## T&G FIRE-WALL and CEILING PANEL SYSTEMS

**INSULROCK** FIRE-WALL panels have an interlocking precision connection joint. Both panel faces are lightly grooved with light mesa wave patterns, stucco embossed of High-Performance Siliconized Polyester Coating for external surfaces, formed of hot dipped 26 gauge G90 galvanized steel, with Core of Structural Mineral Wool type insulation (Factory insulated continuous in-line process).

**Standard Colors:** Polar White, Surey Beige, Sandstone and Light Grey.

### 4" THICK 1 Hour Type, 5" THICK 2 Hour, 6" THICK 3 Hour Type Approval

Fire Panels are tested and approved for their strength, sound insulation properties and fire resistance. In addition Fire Panels meet the requirements stipulated for noncombustible fulfilling requirements of standards UL263 & ASTM E 119.

Classified Listing for 1-hour, 2-hour and 3-hour, assembly rating. Wall framing support members and adjacent construction may require fire protection as specified by applicable building code. The customer is responsible for specifying the appropriate fire protection of these areas.

Fire Proof panels are non-combustible metal sandwiched panels. The panel core consists of structural rock wool for high strength, and **SOUND ATTENUATION.**

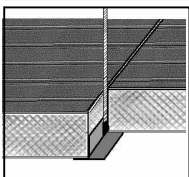


**SOUND REDUCTION**

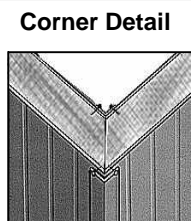
### Features:

- Long Span capabilities
- Installs easy with one crew
- Flexibility to disassemble, move and reinstall
- Used for self supporting partition walls (No Girts Required)
- Made from raw materials that are environmentally friendly and have no VOCs and CFCs that affect the ozone layer or add to global warming potential.

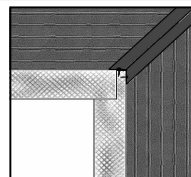
### PANEL CONSTRUCTION DETAILS



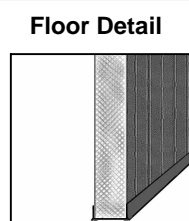
**Suspended Ceiling**



**Corner Detail**



**Ledge Detail**



**Floor Detail**



**Quicker than Block to Install and Relocatable From 8' to 30' High**



**No footings or foundation required.**

Prod.No.	47-3/8" Wide Panels are manufactured to size up to 30' high with Structural Rock Wool Insulated Core.	STC Rating	Weight (Lbs/SqFt)	Thickness of Panel	R-Value	Classified Fire Resistance
						UL
SFW400	26 Ga.G90 Steel - White (Both Sides) Structural Rock Wool	28	4.65	4"	15	60
SFW500	26 Ga.G90 Steel - White (Both Sides) Structural Rock Wool	29	5.50	5"	18.5	120
SFW600	26 Ga.G90 Steel - White (Both Sides) Structural Rock Wool	30	6.20	6"	22	180

Fire Classes given are for partitioning walls, and Fire Resistance, Non-Load Bearing Ceilings.

**KD-STEEL STRUCTURES**  
BY JOHNSON BUILDING SYSTEMS

**CALL FOR PRICING: 800-445-7249**



**FIRE DOORS AVAILABLE**



Easy Roll Fire Door System Model 3000 shown

**4 Weeks+/- Shipment ARO.**

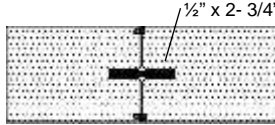


# STRUCTURAL MINERAL FIBER WALL AND CEILING PANEL SYSTEMS

## VERY BEST FIRE WALL PANEL FOR SYSTEMS CONSTRUCTION



4", 5" & 6" Panels Available at minimum quantities.

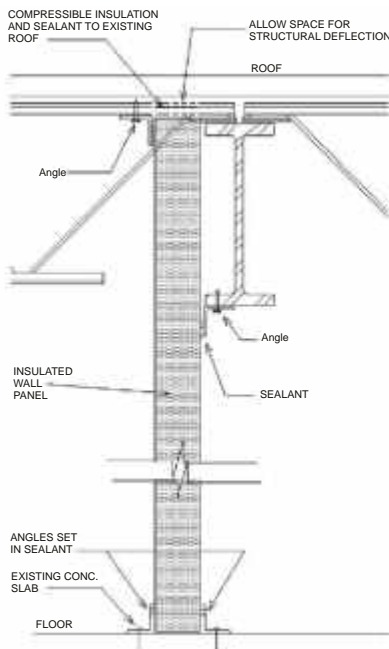


Field Caulk Both Sides of Panel with USDA Silicone from INSOLRAE Building Products. Tongue-and-groove joint with air-tight integral connection for interior rated wall applications.

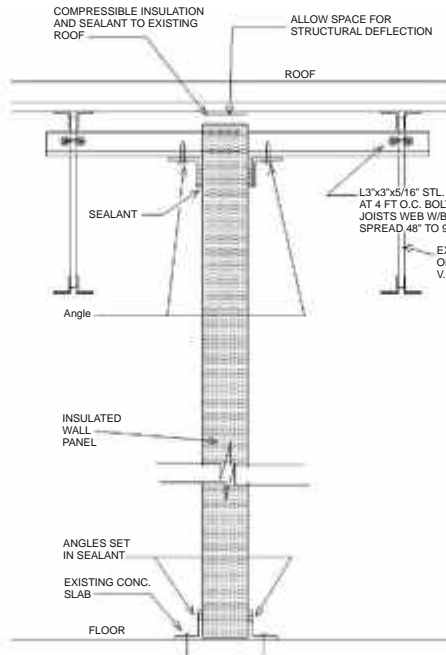


## TEMPORARY OR PERMANENT INSULATED FIRE WALL PANELS

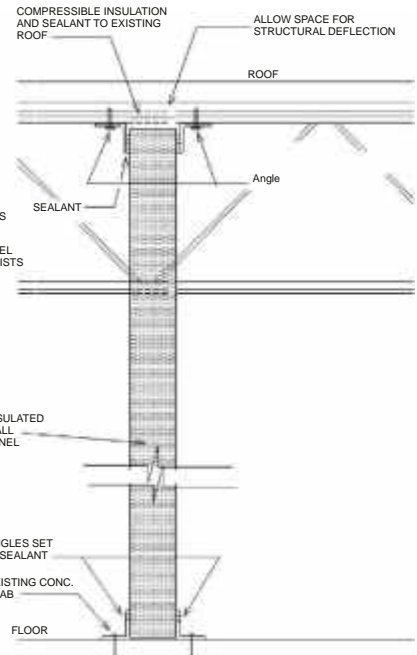
### DESIGNED FOR ROOF DEFLECTION 0.75 TO 3.50 INCHES AS APPROPRIATE



PARTITION DETAIL AT STEEL BEAM







PARTITION DETAIL BETWEEN STEEL JOISTS



PARTITION DETAIL PERPENDICULAR TO STEEL JOISTS

### STEEL STRUCTURALS

<p><b>90° Base Angle</b> 3"x2" (.250" Thickness) Galvanized Steel</p> 	<p><b>90° Base Angle</b> 3"x3" (.250" Thickness) Galvanized Steel</p> 	<p><b>Cee Channel</b> 4"x2" (.16 Ga. Thickness) Galvanized Steel</p> 	<p><b>Rectangular Tube</b> 2"x3" (.125" Thickness) Galvanized Steel Also Available 2"x4"</p> 
---	---	--	--



975 Jaymor Rd. - Southampton, PA 18966-3854  
 Tel: 800-445-7249 or (215) 673-6050 Fax: (215) 322-2076  
 Member: [www.JohnsonEnergyGroup.com](http://www.JohnsonEnergyGroup.com)

