



# PHARMACEUTICAL WAREHOUSE

## BECTON DICKINSON 24' HIGH

### ENVIRONMENTAL CONTROLLED DRUG STORAGE



FM-300 Wall Panel Systems with Jamison 8' x 10' MARK IV Power Operated  
Single Slide Door for Cooler and Clean Room Applications  
Supplied and Designed By: Johnson Building Systems, Inc.  
975 Jaymor Rd - Southampton, PA 18966-3854

Locations:  
Indianapolis, Ind 46268  
Swedesboro, NJ 08085

Tel: 800-445-7249 or (215) 673-6050 Fax: (215) 322-2076 E-Mail: [Sales@JohnsonEnergyGroup.com](mailto:Sales@JohnsonEnergyGroup.com)

# FM-300 WALL PANEL SYSTEMS

## INTERIOR AND EXTERIOR APPLICATIONS

### FM-300 WALL PANELS

### SOLID CORE CONSTRUCTION



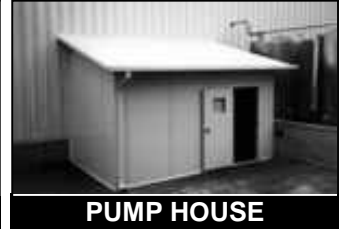
PHARMACEUTICAL



ROOF PENTHOUSE



WATER TREATMENT



PUMP HOUSE

#### PANEL DESIGN (Coverage 42")

INSOLRAE FM-300 thickness 3" (75mm) T&G joint design of a factory foamed urethane core insulation manufactured in a continuous line with a tongue and groove connection.

The "SHADOW LINE" stucco embossed profile accents and stiffens the galvanized sheets with a 3/32" deep, vertical straited groove pattern, painted Imperial White USDA siliconized polyester finish.

#### AVAILABLE:

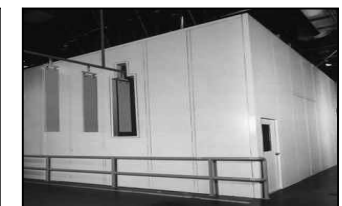
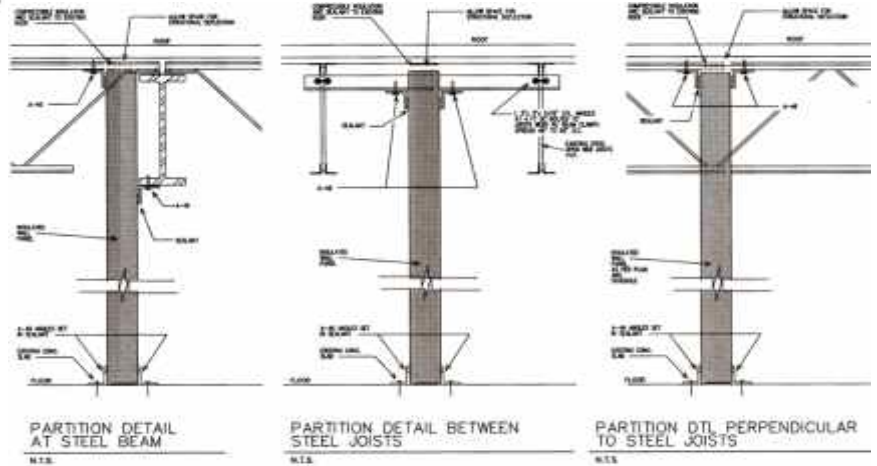
- 2" Urethane R-16 STC 21
- 3" Urethane R-24 STC 22
- 4" Urethane R-32 STC 23



NOISE, MOISTURE, TEMPERATURE CONTROL AND NON-COMBUSTIBLE



TEMPORARY OR PERMANENT FOAMED INSULATED WALL PANELS



**PANEL CONSTRUCTION:**  
FM-300 SERIES PANELS are insulated with polyurethane -- a "THERMOSET" insulation (Non-Melting) that meets the requirements specified in most building codes.

**INSULATION:**  
FM-300 SERIES PANEL with foamed-in-place polyurethane insulation with 3" thickness, providing insulation values of R-24 & STC-22

**FACINGS:**  
FM-300 SERIES PANELS have standard 26 gauge facing of stucco embossed galvanized steel to ASTM A-525 G-90 designation. Base steel shall be structural quality to minimum Grade "A" 33,000 PSI, conforming to ASTM A-446.

**STRUCTURAL:**  
ASTM E72  
Vacuum chamber tested for wind and suction load deflections on wall assemblies. ASTM E72-9  
The panel achieved a vertical load bearing capacity on standard width to maximum 19,800 lbs. compressive force at .06" deflection.

**FATIGUE TEST:**  
Standard panels were tested by independent laboratories for long term deflection failure. The panels exceeded 2 million alternate cycles without failure or damage.

**BOND STRENGTH:**  
The panel was tested for Tensile Bond strength of the metal to foam interface to more than 1200 lb. force without delamination.

**CLASS 1 FIRE RATING**  
Meets special requirements of model building codes and is certified and approved by the following authorities.  
ULI - Underwriters Laboratories Inc.  
FM - Factory Mutual  
WH - Warnock Hersey  
ULC - Underwriters Laboratories Canada  
NYFC - New York State Toxicity Standard  
FM-4880 - Passed testing for Class 1 Fire rating  
ASTM-E84 - Flame Spread 20; smoke developed: 350  
UBC 26-4 - Passed Multi-story test with standard panels  
NYC - MEA Report  
USDA/FDA  
**THERMAL TRANSMISSION:**  
ASTM C-518  
ASTM C-236  
**VAPOR BARRIER:**  
ASTM E283 Air infiltration "O" at 20 PSI  
ASTM E331 Water penetration "O" at 20 PSI

