



# STRUCTURAL WALL PANELS

4" & 5" Urethane Panels - 88,500 sq. ft. - up to 36' High  
17 Tractor Trailer Loads - 60+ Doors

BALL PLASTICS  
CINAMINSON, NJ 08077



Johnson Building Systems, Inc.  
975 Jaymor Rd.  
Southampton, PA 18966-3854  
Tel: (215) 673-6050 Fax: (215) 322-2076





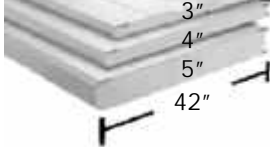
# POLYURETHANE INSULATED WALL AND CEILING PANEL SYSTEMS

FM 300 FM 400 FM 500

## BEST "FM/UL" PANEL FOR SYSTEMS CONSTRUCTION



(SMP) Imperial White  
Standard Color  
Shadow Line Profile  
52' High Maximum  
Interior or Exterior

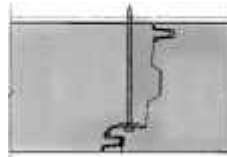


Tongue-and-groove joint with  
air-tight integral connection  
for interior and exterior  
applications.

Model	R-Value	STC
FM 300 - 3"	R-24	22
FM 400 - 4"	R-32	23
FM 500 - 5"	R-40	24

CALL  
FOR  
PRICING

3", 4" & 5" Panels Available at minimum quantities  
FM (Factory Mutual Approved)  
Pre-Caulk Ambient Side with Non-Drying Butyl



STOP INFILTRATION  
AND AIR LEAKAGE



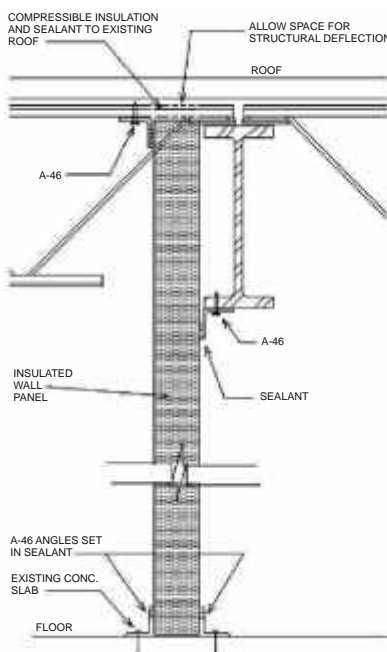
White Roof Deck



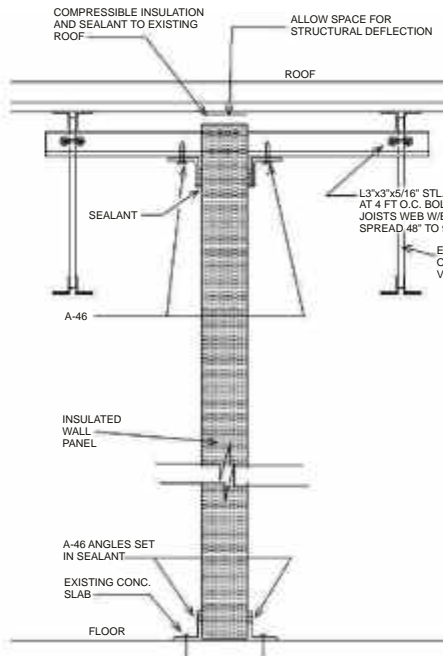
Meets - USDA

## TEMPORARY OR PERMANENT FACTORY INSULATED WALL PANELS

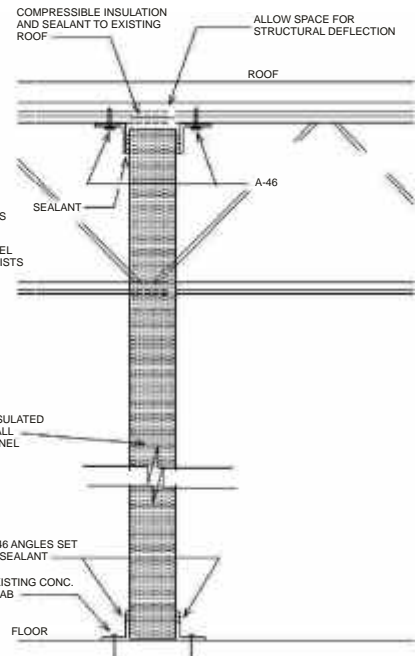
DESIGNED FOR ROOF DEFLECTION 0.75 TO 3.50 INCHES AS APPROPRIATE



PARTITION DETAIL  
AT STEEL BEAM



PARTITION DETAIL BETWEEN  
STEEL JOISTS



PARTITION DETAIL PERPENDICULAR  
TO STEEL JOISTS

### ALUMINUM STRUCTURALS

CALL 1-800-445-7249 FOR PRICING

**A-44**  
Base Channel  
4"x1-1/2"x16' (.125" Walls) White Painted

**A-43**  
Ceiling T-Bar  
4"x2"x16' (.125" Walls) White Painted

**A-46**  
90° Wall Angle  
3"x3"x16' (.125" Walls) White Painted  
**A-40**  
90° Wall Angle  
2"x2"x16' (.125" Walls) White Painted

**A-45**  
120° Wall Angle  
3"x3"x16' (.125" Walls) White Painted  
**A-48**  
108° Wall Angle  
2"x4"x16' (.125" Walls) White Painted